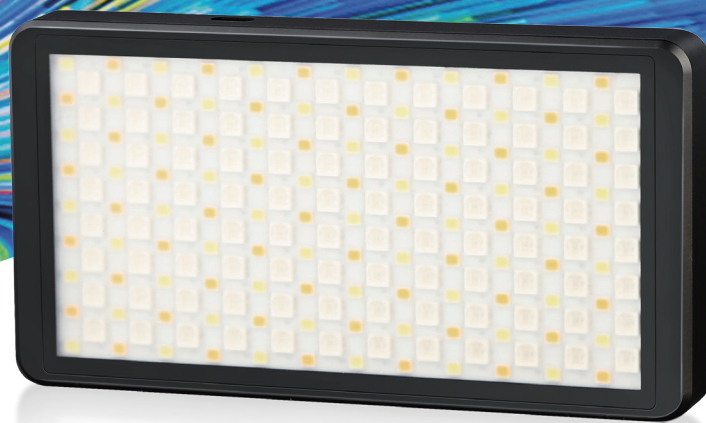


# SWIT



## POCKET RGB

S-2712



CCT Mode



HSI Mode



20x DEMO



CRI 96  
TLCI 99



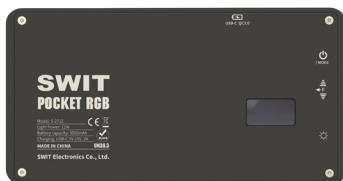
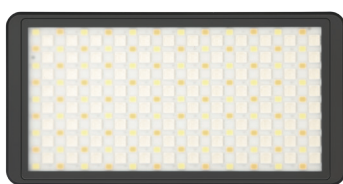
Built-in  
Battery



CNC housing

RGB

## RGBW SMD-LEDs



- ◆ 96pcs RGB SMD LEDs
- ◆ 108pcs Bi-color SMD LEDs
- ◆ 12W power output
- ◆ 320Lux @ 1 meter
- ◆ 2500-9000K color temp
- ◆ CCT/HSI modes
- ◆ CRI 96, TLCI 99
- ◆ CNC metal housing



## CCT / HSI / 20x Effects

Switched between Color Temperature mode (CCT) and Hue / Saturation / Intensity mode (HSI) to adjust the light color easily. The light has built-in 20x Demo effects, including the commonly used car lights, candles, lightning, party simulation effects.



Police car



Ambulance



Fire truck



Lightning



Strobe



High/low  
beam bulb



Double flash



Screen



Candle



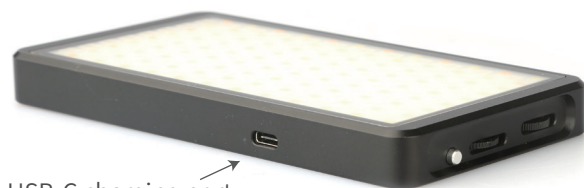
Party



## Built-in 3000mAh Battery

S-2712 has built-in a 3000mAh Lithium polymer battery, which can power the light at 100% output for at least 1.5 hours.

You can charge the battery by USB type C port, by any 5-15V USB-C charger. QC3.0 supported.



USB-C charging port



## Accessories

S-2712 Pocket RGB light provides a Diffuser cover and a 40° honeycomb in standard package.



Diffuser cover



40° honeycomb

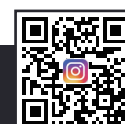
SWIT Electronics Co., Ltd.  
+86-25-85805753  
<http://www.swit.cc>  
Email: [contact@swit.cc](mailto:contact@swit.cc)

SWIT Electronics America, Inc  
1-(408)260-8258  
<http://www.switusa.com>  
Email: [info@swit.us](mailto:info@swit.us)

SWIT Electronics Europe GmbH  
+49(0)20659799339  
<http://www.switeu.com>  
Email: [info@swit-europe.com](mailto:info@swit-europe.com)



Facebook Page



Instagram